



Cook County Freight Plan

Transport Chicago

June 1, 2018

AGENDA

- **Where we've been**
- **Where we are**
- **Where we're going**

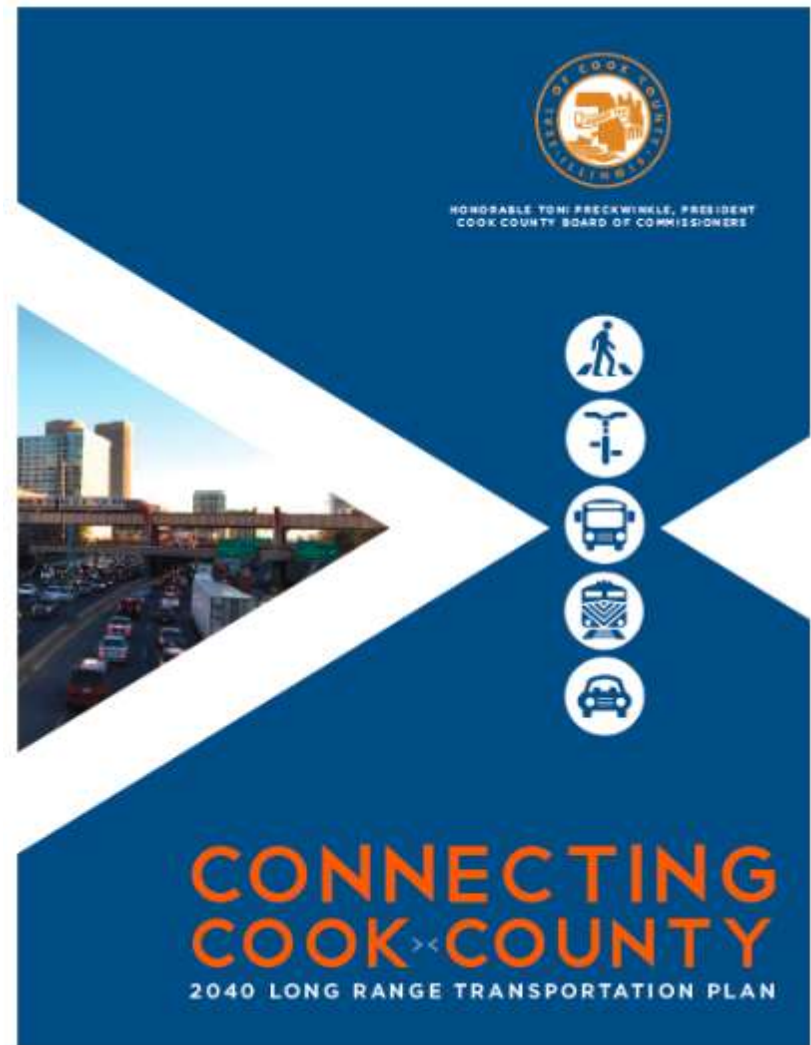


WHERE WE'VE BEEN

CONNECTING COOK COUNTY

- Investigated existing conditions
- Compiled needs and set goals
- Involved the public
- Consulted with experts and leaders

Approved by Cook County Board in August 2016



RECENT FREIGHT INVESTMENTS



- **Touhy Avenue project**
- **I-294/North Ave interchange improvements**
- **2017 Invest in Cook program**
 - Seven freight projects
 - \$4M in IDOT EDP awards
- **2014-17, 4 projects leveraged \$119M in external grants and \$62M in private investment**



WHERE WE ARE

COOK COUNTY FREIGHT CHALLENGE

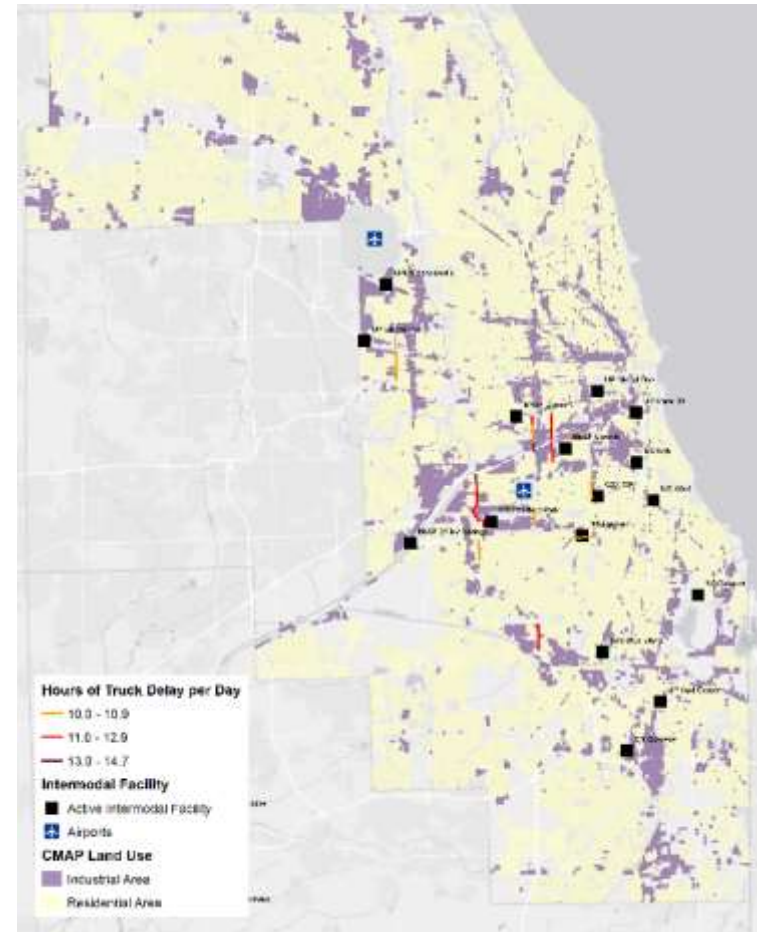
- **Extensive, multimodal freight network is backbone of County's economy**
 - Supports key industries like manufacturing and trade
 - Freight industries: 56 percent of economic output
 - Employment growth in TDL firms

- **Freight faces significant challenges to its long-term success**
 - Infrastructure
 - Land use
 - Workforce

FREIGHT CONGESTION

Route	From	To	Hours of Delay (max)
Harlem Ave.	I-55	95 th St.	14.7
Cicero Ave.	Ogden Ave.	I-55	13.4
Pulaski Rd.	26 th St.	47 th St.	12.0
Cicero Ave.	115 th St.	I-294	11.6
Sayre Ave.	71 st	73 rd St.	11.4
Cicero Ave.	67 th St.	73 rd St.	11.4
Kedzie Ave.	I-55	Pershing Rd.	10.7
Western Ave.	55 th St.	63 rd St.	10.6
Mannheim Rd.	Lake St.	I-290	10.3
79 th St.	Kedzie Ave.	Western Ave.	10.2

Freight Routes with More than 10 Hours Truck Delay

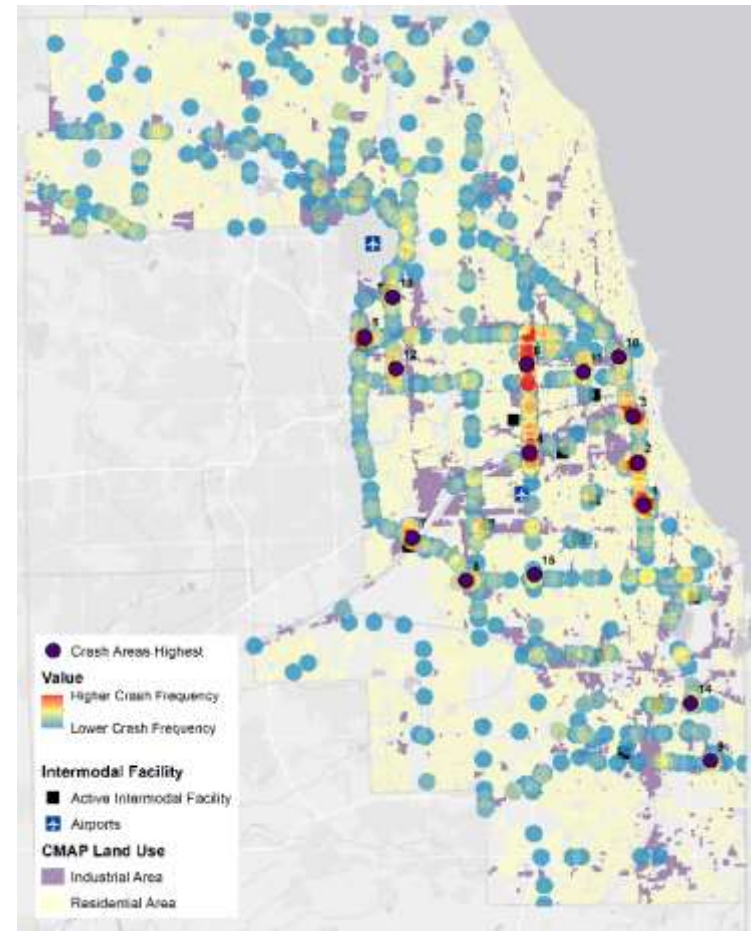


Source: IDOT, CMAP, Analysis by AECOM, Cambridge Systematics, 2017

SAFETY

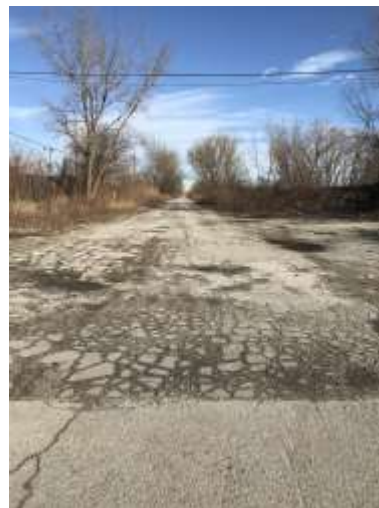
Rank	Route	Location (To/From or Intersection)
1	I-94	63rd St. to Marquette Rd.
2	I-90/94	43rd Street to 47th St.
3	I-90/94	Cermak Road to 31st Street
4	Cicero Ave.	31st St. to 47th Street
5	North Ave.	I-294 to Wolf Rd.
6	Cicero Ave.	North Ave. to Fifth Ave.
7	I-294	I-55 to U.S. 45 (La Grange Rd.)
8	95th St.	Roberts Rd. to Harlem Ave.
9	I-80	At Torrence Ave.
10	I-90/94	Chicago Ave. to Grand Ave.
11	Western Ave.	Grand Ave. to I-290
12	U.S. 45 (Mannheim Rd.)	Lake St. to I-290
13	U.S. 45 (Mannheim Rd.)	Irving Park Rd. to Belmont Ave.
14	I-94	At Sibley Blvd.
15	Cicero Ave.	At 99th St.

Truck Crash Hotspots



Source: IDOT, CMAP, Analysis by AECOM, 2017

PAVEMENT CONDITIONS





WHERE WE'RE GOING

DRAFT RECOMMENDATIONS

- Leadership
- Roadway and Truck Routing Improvements
- Rail Improvements
- Coordinated Community and Economic Development



LEADERSHIP

- **The County will take a leadership role in advocating for freight policy priorities:**
 - **Voice for municipalities**
 - **Filling the gaps**
 - Coordinate with regional agencies
 - Implement high priority activities
 - **Support funding for freight investments**

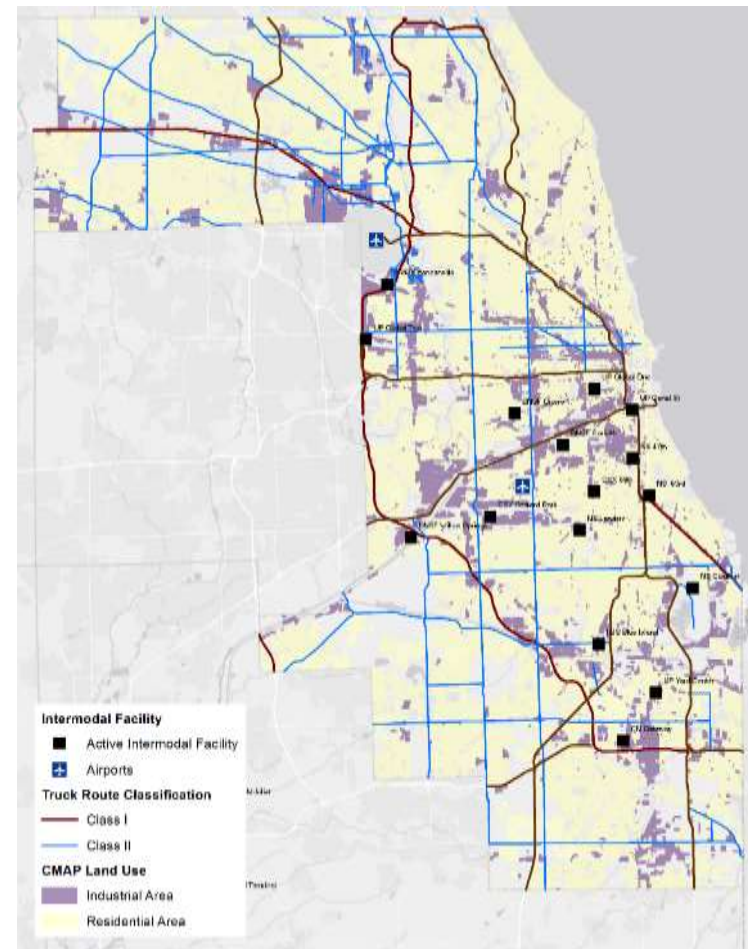


ROADWAY AND TRUCKING IMPROVEMENTS

- Connected truck route network
- Coordinated truck permitting
- Understand truck parking needs



Current Truck Routes



Source: IDOT, CMAP, Analysis by AECOM, 2017

ROADWAY AND TRUCKING IMPROVEMENTS

- Support “Priority Trucking Corridors”
- Support first- and last-mile connections
- Enhance expressway access
- Make safety improvements at key locations



PRIORITY TRUCKING CORRIDORS



RAIL IMPROVEMENTS

- **CREATE Program**
 - 75th Street CIP
 - Remaining projects
- **At-Grade Crossing Priorities**
 - Lead engineering and construction in partnership with suburban municipalities and railroads
- **Freight and Shared-Use Facilities**
 - New/improved rail spurs
 - Access to intermodal facilities
 - Improvements on passenger/freight corridors



RAIL IMPROVEMENTS

Roadway Crossing	At-Grade Railroad Crossing	City	AADT	Truck AADT
115th St.	IHB-Main Blue Island to McCook (CSX)	Alsip	12,000	1,080
147th St.	Metra-RI Main - Vermont St to Joliet	Midlothian	13,700	1,096
162nd St.	CSX: GTW - Elsdon Sub	South Holland	28,100	1,911
31st St.	IHB-Main McCook to Franklin Park	La Grange Park	15,700	1,099
65th St.	BELT/IHB-North Clearing	Bedford Park	12,400	1,736
80th Ave.	Metra-RI Main - Vermont St to Joliet	Tinley Park	33,400	4,676
95th St.	CSX: GTW - Elsdon Sub	Evergreen Park	27,300	2,248
95th St.	CSX: IHB - Blue Island to 59Th St	Evergreen Park	28,100	2,248
Central Ave.	Metra-NS SWS to Manhattan	Oak Lawn	25,600	1,536
Dempster St.	Metra-MILW North Line	Morton Grove	39,000	1,950
Des Plaines River	UP: CNW - Milwaukee Sub - South	Des Plaines	21,600	1,080
Dundee Rd.	Metra-MILW North Line	Northbrook	25,200	1,764
Dundee Rd.	UP: CNW - Milwaukee Sub – North(*)	Northbrook	29,600	2,072
First Ave.	UP: CNW - Geneva Sub	Maywood	23,000	2,070
Grand Ave.	Metra-MILW West & NCS	Elmwood Park	20,500	1,435
Harlem Ave.	BNSF: A - Chicago to Galesburg CBO	Riverside	29,100	1,455
Oakton St.	UP: CNW - Milwaukee Sub - South	Des Plaines	24,100	1,687
Pulaski Rd./ Crawford Rd.	Metra-RI Main - Vermont St to Joliet	Midlothian	18,200	2,548
Thatcher Ave.	Metra-MILW West & NCS	River Grove	26,300	2,367
Touhy Ave.	UP: CNW - Milwaukee Sub – South(*)	Des Plaines	33,400	4,676
Vermont St.	Metra-RI Main - to Vermont Street	Blue Island	13,300	1,064

COMMUNITY & ECONOMIC DEV.

- **Coordinate with existing programs and efforts**
 - Chicago Regional Growth Corporation
 - Chicago Metro Metal Consortium
 - South Suburban Economic Growth Initiative
 - Landside access to port and air facilities

- **Align pre-development activities**
 - Environmental assessment and remediation
 - Financial incentives
 - Infrastructure improvements
 - Site assembly, clear title, and extinguish back taxes

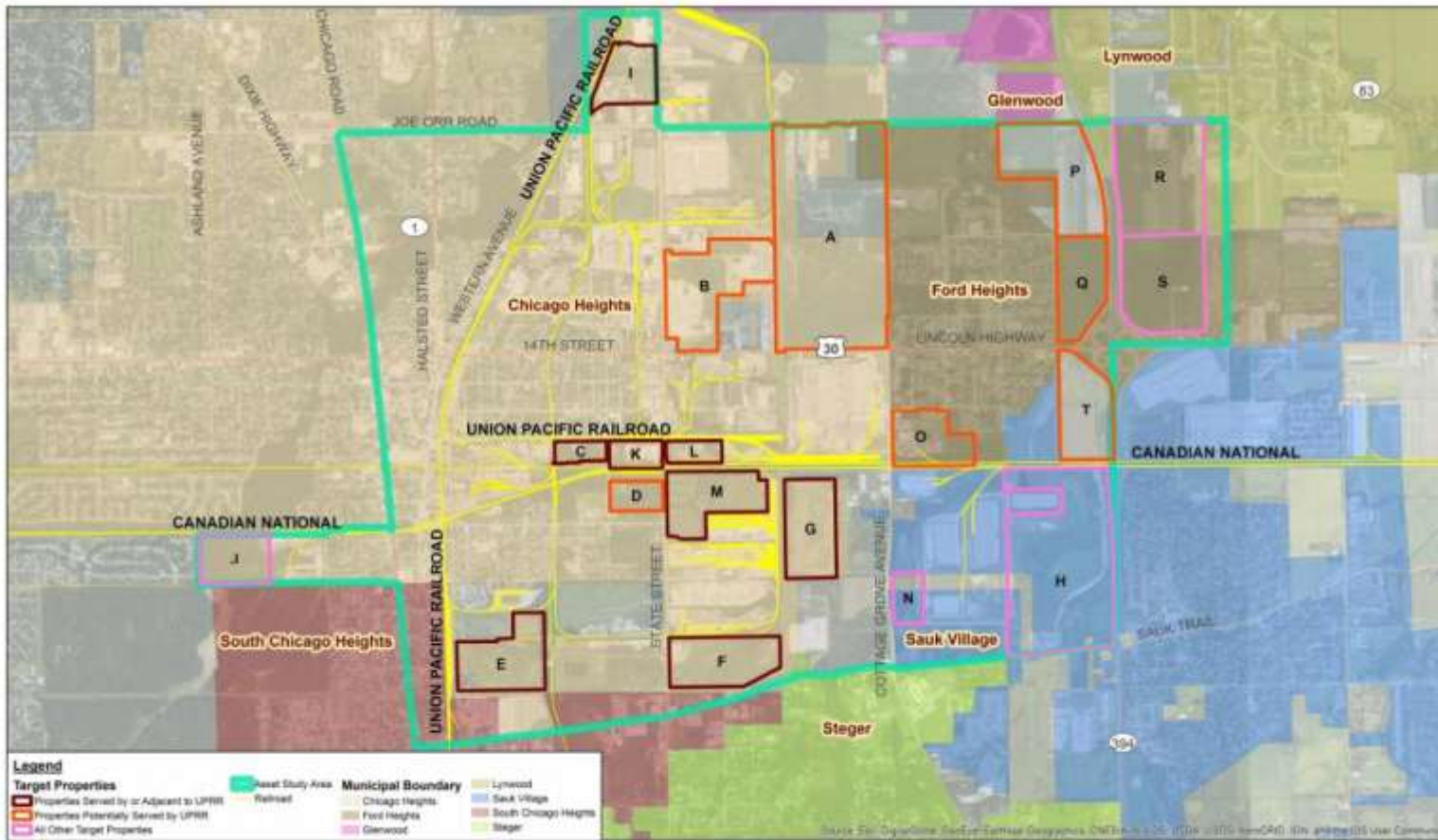


COMMUNITY & ECONOMIC DEV.

- Connect employers that benefit from infrastructure investments to screening and training programs



LINCOLN HIGHWAY LOGISTICS CORRIDOR STUDY



LINCOLN HIGHWAY LOGISTICS CORRIDOR STUDY AREA

NEXT STEPS

- **Refine Recommendations and Draft Plan**
 - June
- **Develop Final Plan**
 - June/July
- **Present Plan to County Board**
 - Anticipated Fall
- **Implementation**



John Yonan
Superintendent
Cook County Department of Transportation and Highways
john.yonan@cookcountyil.gov

WWW.CONNECTINGCOOKCOUNTY.ORG



Alex Beata
Freight Transportation Manager
Cook County Department of Transportation and Highways
alexander.beata@cookcountyil.gov

WWW.CONNECTINGCOOKCOUNTY.ORG



WWW.CONNECTINGCOOKCOUNTY.ORG